

**martina geroni**



CATALOGUE 2023

[www.martinageroni.com](http://www.martinageroni.com)





Photo ©Federica Calzi



Photo ©Federica Calzi

---

## CONTENTS

ABOUT

COLLECTIONS

COLOURS

ROSA MORADA  
*p.12*

SUNAFÈ  
*p.36*

KENTA  
*p.52*

ANGELA  
*p.62*

VENTIDUE  
*p.66*

EFESTO  
*p.78*

TABLI NO  
*p.84*

NAEGO  
*p.84*

HYGGE  
*p.100*

PAN GU  
*p.112*

CABOSSA  
*p.118*

AIRONE  
*p.130*



After some working experiences in Italy and Mexico as a traditional Architect, she feels the need of reinvent herself as a professional.

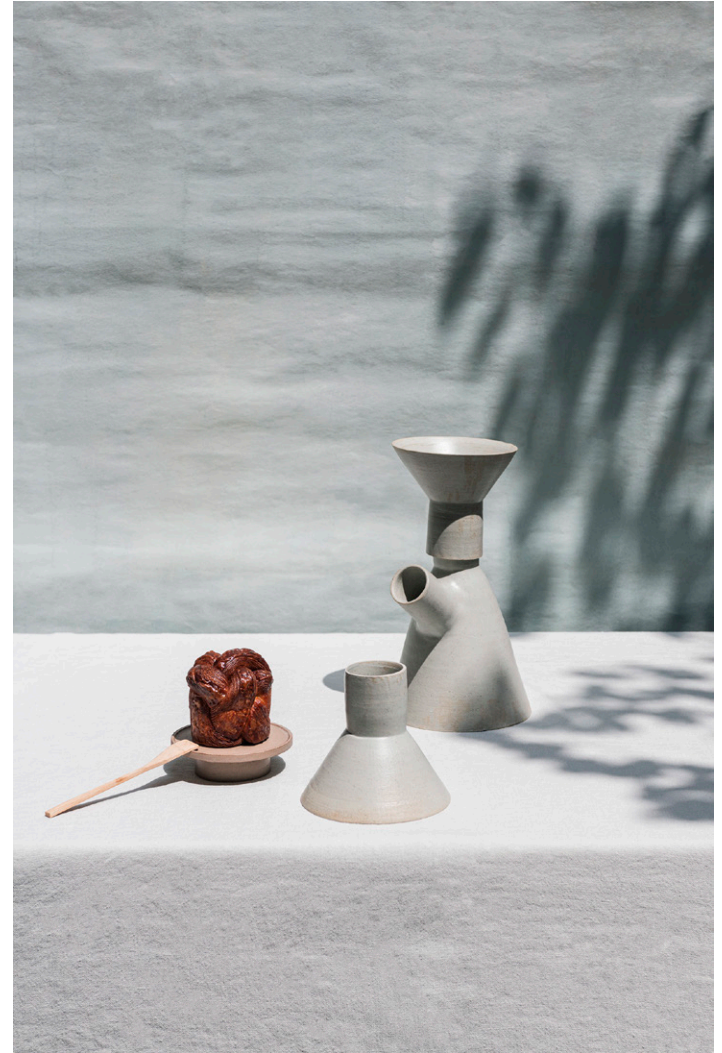
Nowadays she dedicates her daily life to the creation of something natural, handmade and concrete. Always devoted to the Environment, she mediates a dialogue between it and Architecture attending several workshops on the recognition and research on natural clays and raw earth (adobe) as the solution for the building sector. She emerges from and for the earth, as a creative artisan: she imagines and creates useful and multifunctional everyday objects with clean and neat shapes.

Even looking for sustainable answers to everyday needs recovering natural scraps, she and her life partner got rid of disposable plastic waste since 2017.



*foto di Valentina Casalini  
styling di Veronica Leali*





*foto di Valentina Casalini  
styling di Veronica Leali*



*foto di Valentina Casalini  
styling di Veronica Leali*





# ROSA MORADA

---

---

The name of the collection reminds to a wooden sample received after a Mexican working period spent in contact with young local architects and handcrafters which wished to me to start my own artistic experience in Italy.

totem  
Domenico e Filumena

(couple set)



**TOTEM SCULPTURE: COMBINING  
ART AND FUNCTIONALITY**

Martina Geroni's collections can be presented as totem sculptures which combine art and functionality. This idea comes from 'Impagliata' tradition that was born in Italy during the 15th century. People used to stack and pile up many dishes and bowls and gave them to pregnant women, after the childbirth. Thanks to 'Impagliata' totem', the woman could have her first complete meal.

2 coffee cups  
2 bowls  
2 soup and dinner plates  
·  
stoneware  
·  
Ø 5cm - H 6,5cm  
Ø 12cm - H 8,5cm  
Ø 17cm - Ø 25 - H 3,5cm

\*Handmade products are unique: measures, shape and colours can slightly vary

**totem  
Fefè**

(single set)



- 1 coffee cups
- 1 glass
- 1 bowl
- 1 soup and dinner plates
- .
- stoneware
- .
- Ø 5cm - H 6,5cm
- Ø 9cm - H 11cm
- Ø 12cm - H 8,5cm
- Ø 17cm - Ø 25 - H 3,5cm

\*Handmade products are unique: measures, shape and colours can slightly vary

**totem  
Caramella**

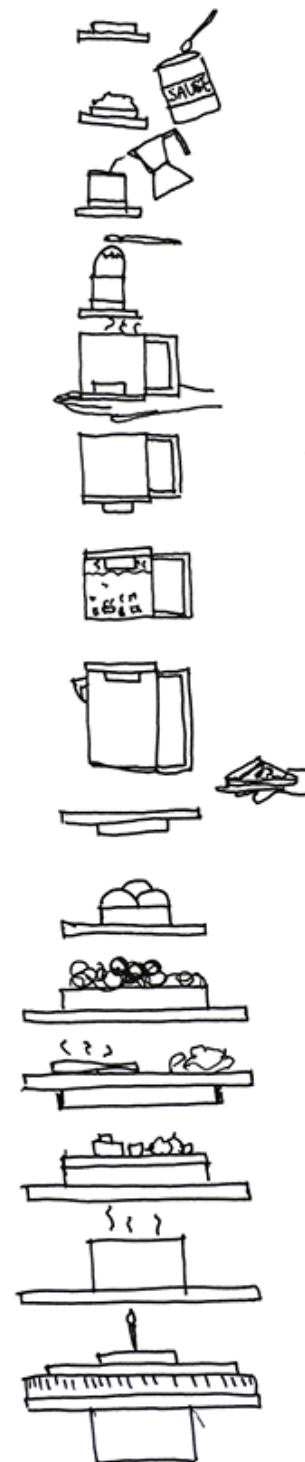
(breakfast set)



- 1 coffee cups
- 1 glass
- 1 bowl
- .
- stoneware
- .
- Ø 5cm - H 6,5cm
- Ø 9cm - H 11cm
- Ø 12cm - H 8,5cm

\*Handmade products are unique: measures, shape and colours can slightly vary

Every piece of ROSA MORADA collection can have different functionalities and can be combined with other objects of the same edition.





coffee cups

stoneware

Ø 5cm - H 6,5cm

\*Handmade products are unique: measures, shape and colours can slightly vary



glass

stoneware

Ø 10cm - H 7,5cm

\*Handmade products are unique: measures, shape and colours can slightly vary

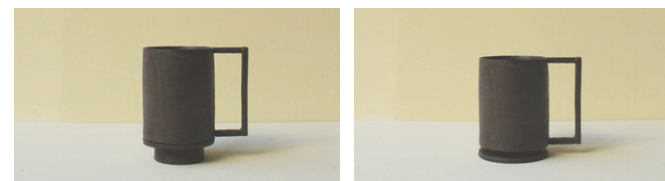


glass/cup  
·  
stoneware  
·  
Ø 9cm - H 10,5cm

\*Handmade products are unique: measures, shape and colours can slightly vary

mug  
·  
stoneware  
·  
Ø 9cm - H 11cm

\*Handmade products are unique: measures, shape and colours can slightly vary



bowl

·  
stoneware

·  
Ø 12cm - H 8,5cm

\*Handmade products are unique: measures, shape and colours can slightly vary

teapot

·  
stoneware

·  
Ø 12cm - H 13cm

\*Handmade products are unique: measures, shape and colours can slightly vary





little jug

·  
stoneware

·  
Ø 10 cm - H 20cm - 1L

\*Handmade products are unique: measures, shape and colours can slightly vary



jug

·  
stoneware

·  
Ø 10cm - H 24cm - 1,5L

\*Handmade products are unique: measures, shape and colours can slightly vary



starter/dessert plate

•  
stoneware

•  
Ø 11cm - Ø 16cm - H 3cm

\*Handmade products are unique: measures, shape and colours can slightly vary



dinnerplate -soup plate

•  
stoneware

•  
Ø 16cm - Ø 24cm- H 4cm

\*Handmade products are unique: measures, shape and colours can slightly vary



tray  
·  
stoneware  
·  
Ø 30cm - Ø 35cm - H 4cm

\*Handmade products are unique: measures, shape and colours can slightly vary



place mat - pizza plate - tray  
·  
stoneware  
·  
Ø 34 - H 0,7cm

\*Handmade products are unique: measures, shape and colours can slightly vary



tray

·  
stoneware

·  
43cm x 18 - H 0,5cm

\*Handmade products are unique: measures, shape and colours can slightly vary





# SUNAFÈ

---

---

Sunafè is a Greek ancient word that means 'union'. The designing idea comes from the Androgynus myth of Platone: seeing that human beings have been separated by Zeus in many halves, every person is now looking for its own half. Every object of this collection is a half of a whole having a 'soul mate' in the world.



totem  
Fantoccio



Sunafè totems are made by three objects: the little bowl for ice cream, the glass for a fresh lemonade and the bowl for a salad or a hot pureed soup.

little bowl  
bowl  
glass

stoneware

Ø 9cm - H 5cm  
Ø 18cm - H 9cm  
Ø 7cm - H 11cm

\*Handmade products are unique: measures, shape and colours can slightly vary





jug

stoneware

Ø 14cm - H 16cm

\*Handmade products are unique: measures, shape and colours can slightly vary



bowl

stoneware

Ø 18cm - H 9cm

\*Handmade products are unique: measures, shape and colours can slightly vary



glass  
·  
stoneware  
·  
Ø 7cm - H 11cm

\*Handmade products are unique: measures, shape and colours can slightly vary



little bowl  
·  
stoneware  
·  
Ø 9cm - H 5cm

\*Handmade products are unique: measures, shape and colours can slightly vary





# KENTA

---

KENTA collection has been designed with Kaori Miyairi chef, which family has a traditional Japanese tea house in Tokyo.

KENTA is composed by a set of four bowls for Matcha tea. The traditional tea bowl (chawan) changes shape through seasons, broadening itself to the hottest months of the year like a flower, allowing the hot beverage to get colder.



chawan  
·  
stoneware  
·

Ø 14cm - H 7,5cm  
Ø 12cm - H 7,5cm  
Ø 10cm - H 7,5cm  
Ø 8cm - H 7,5cm

\*Handmade products are unique: measures, shape and colours can slightly vary







# ANGELA

---

---

Dedicated to my grandmother Angela,  
which made for me and my sisters  
sweet 'Mascarpone cream'.

It seems that 'Mascarpone cheese' comes from Lodi town, in northern Italy, where it has been created in the 12th century. From here, the idea to create a specific bowl for preparing the unique dessert 'Mascarpone cream'.



mascarpone chees bowl  
·  
stoneware  
·  
Ø 16cm - H 20cm

\*Handmade products are unique: measures, shape and colours can slightly vary

By turning the objects upside-down, the 'dessert stand' becomes a 'mixing bowl' with a steady base and, once the cream is ready, the base can be used as the 'lid' to cover the dessert.





# VENTIDUE

---

---

Dedicated to 'Triadic ballet' by Oskar Shlemmer.

The geometric and abstract shapes of the triadic ballet come to life in the cups, bowls and teapots of the Ventidue collection.



shot glass

·  
stoneware

·  
Ø 5cm - H 6cm

\*Handmade products are unique: measures, shape and colours can slightly vary

coffee cup

·  
stoneware

·  
Ø 7cm - H 4cm

\*Handmade products are unique: measures, shape and colours can slightly vary



coffee cup

·  
stoneware

·  
Ø 5,5cm - H 7cm

\*Handmade products are unique: measures, shape and colours can slightly vary



mug

·  
stoneware

·  
Ø 8cm - H 10cm

\*Handmade products are unique: measures, shape and colours can slightly vary





teapot

·  
stoneware

·  
Ø 12cm - H 13cm

\*Handmade products are unique: measures, shape and colours can slightly vary



bowl

·  
stoneware

·  
Ø 17/13cm - H 8cm

\*Handmade products are unique: measures, shape and colours can slightly vary



dinner plate

·  
stoneware

·  
Ø 26cm - H 1,5cm

\*Handmade products are unique: measures, shape and colours can slightly vary



dinner plate

·  
stoneware

·  
Ø 26cm - H 1cm

\*Handmade products are unique: measures, shape and colours can slightly vary



dinner plate

·  
stoneware

·  
Ø 27cm - H 1cm

\*Handmade products are unique: measures, shape and colours can slightly vary

soup plate

·  
stoneware

·  
Ø 23cm - H 4cm

\*Handmade products are unique: measures, shape and colours can slightly vary



# EFESTO

---

Efesto collection, a project for Materiae Edizioni Napoli is a combination of five vases inspired by the Greek god's genius.

The classical vase elements (foot, body, shoulder, neck and lip) have been transformed in five handmade stoneware vases.

Each object can be used both individually and combined with others four in order to shape the leg of a small table.

The Greek God Hephaestus created small movable tables. Thanks to particular contraptions, these tripods could move on three legs, bringing food and beverages to the gods. This dynamicity returns in this collection: each object can be used individually (as jar, bowl, cake-stand, tray, etc..) or combined with others in order to shape sculptures or legs of small tables that can vary from time to time.



vases  
·  
stoneware  
·  
Ø 30cm - H 45cm

\*Handmade products are unique: measures, shape and colours can slightly vary

photo by Teresa Carnuccio



photos by Teresa Carnuccio

# TABLINO

---

---

Tablino collection is a welcoming set for the guests. The name comes from the Latin word 'tablinum': the room where the master of the house hosted his visitors.

The collection is composed by two objects: a jug for the water that can be used also as a teapot whose lid becomes the glass/tea cup or the coffee cup by flipping it.





teapot/jug

·  
stoneware

·  
Ø 14cm - H 19cm

\*Handmade products are unique: measures, shape and colours can slightly vary



glass/cup

·  
stoneware

·  
Ø 12/5,5cm - H 10,5cm

\*Handmade products are unique: measures, shape and colours can slightly vary



# NAEGO

---

---

The name of NAEGO collection comes from merging the final parts of the words *Elena* and *Diego*, a pastry chef and a baker.

Naego collection is composed by a bottle of oil with a ramekin on the top which can be use both as the cap of the bottle and as a small dish for tasting the oil.



Photo ©Valentina Casalini  
Styling di Veronica Leali

oil bottle  
·  
stoneware  
·

Ø 6cm - H 22cm

\*Handmade products are unique: measures, shape and colours can slightly vary



# HYGGGE

---

---

Objects inspired by the Danish philosophy of life focused on creating harmony and a feeling of warmth inside your home.



mini  
•  
stoneware  
•  
Ø 7cm - H 6cm

\*Handmade products are unique: measures, shape and colours can slightly vary







medio  
·  
stoneware  
·  
Ø 9cm - H 7cm

\*Handmade products are unique: measures, shape and colours can slightly vary





grande - Angelina  
stoneware  
Ø 9cm - H 10cm

\*Handmade products are unique: measures, shape and colours can slightly vary



# PAN GU

---

According to Chinese myth, heaven and earth were once united within the egg of the universe. One day the hero PAN GU was born who, after having formed for 18,000 long years, aroused himself but, feeling tight and unable to move or breathe, decided to stand to separate with his body (the cup) the sky (the lid) from the earth (the saucer). PAN GU grew for another 18,000 years until it became very high, distancing heaven and earth by tens of thousands of kilometers. One day, when heaven and earth were too far apart to be reunited, the man decided to rest. But, too weary for the strain endured for so long, he fell to the ground lifeless: his eyes became the Sun and the Moon; his breath the wind; his voice the thunder; limbs and head the mountains; the veins the rivers; the muscles fertile soil; beard, hair and hair vegetation; teeth and bones precious metals ... PAN GU, dying, gave birth to the world. If only he could smell the scent of tea, he would have stopped earlier to take a break sipping the infusions of his own world!

gaiwan  
·  
stoneware  
·  
Ø 8cm - H 7cm

\*Handmade products are unique: measures, shape and colours can slightly vary



gaiwan  
·  
stoneware  
·  
Ø 7cm - H 9cm

\*Handmade products are unique: measures, shape and colours can slightly vary





set: gaiwan + little tea jug + 2 cup  
stoneware

\*Handmade products are unique: measures, shape and colours can slightly vary



# CABOSSA

---

We recently discovered that the fruit of the cocoa plant is CABOSSA. It has an elongated shape, about 15 cm long and is yellow-orange-red; under the rind are the broad beans covered with a white pulp.

After dividing the cabossa into two parts, the beans are extracted and fermented for about seven days and dried for another fifteen days. In the laboratory the bean is then roasted, ground and squeezed: from here you get the cocoa powder and butter.

The most common container among the natives of Meso-America to drink the beverage of cocoa was the fruit of the 'crescentia kujete': a sort of pumpkin that was dried and decorated, called jicara by the Spaniards and chicchera by the Italians.

Cocoa arrived in Spain in the mid-1500s and then spread throughout the rest of Europe during the seventeenth century. To taste it were used a cup and a saucer, respectively called chicchera and mancerina.

Curiosity: the name of the saucer comes from the first marquis of Mancera, viceroy of Peru.

chicchera and mancerina  
·  
stoneware  
·  
Ø 13cm - H 11,5cm

\*Handmade products are unique: measures, shape and colours can slightly vary







# AIRONE

The heron (airone) has always been part of my landscape.

Despite being an animal linked to the Air element, it is connected to Water. In fact, it is found along watercourses: canals, rivers, etc.

Airone collection is dedicated to this beautiful animal: it can be used as a jug.

jug

stoneware

Ø 3/10cm - H 20cm

Ø 11,5cm - H 5cm

\*Handmade products are unique: measures, shape and colours can slightly vary

glass

stoneware

Ø 6cm - H 10cm

\*Handmade products are unique: measures, shape and colours can slightly vary



little bowl

·  
stoneware

·  
Ø 11,5cm - H 5cm

\*Handmade products are unique: measures, shape and colours can slightly vary







fiore di cotone



miele



rosa gambero



limone



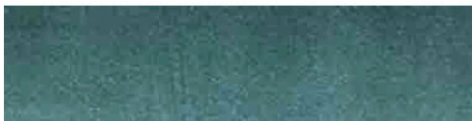
salvia



buccia di zenzero



grigio foca



pavone

## COLLABORATION

FITTINGS  
Caccaro  
Cattelan  
Exteta  
Flexform  
Gervasoni 1882  
HD Surface  
Lema  
Marazzi  
Mirage  
Molteni&C  
Paola Lenti  
RBM  
Valcucine

CATALOGUES  
Arlinea  
B&B-Maxalto  
Bolzan Letti  
Cassina  
Cesar  
Ceramica Sant'Agostino  
Cierre1972  
Fabita  
Flou  
Gebrüder Thonet Vienna  
La calce del Brenta  
La Palma  
Meridiani  
Molteni&C  
Roda  
Talent  
Terraforma  
Valcucine  
Very Simple Kitchen

